

Akira Minagawa for Kvadrat



kvadrat

Akira Minagawa for Kvadrat

The Akira Minagawa collection for Kvadrat is characterised by refined patterns, detailed embroidery and sophisticated nuances. It brings together three upholstery textiles and a curtain.

As the collection reflects, Akira Minagawa often gets his inspiration by observing nature, life and society, and always starts his creative process by hand. He depicts scenes from nature through motifs that are reflected in textiles using a range of different techniques, such as embroidery, weaving and printing. In this embroidered and woven collection, every stitch of embroidery expresses the uniqueness of Minagawa's pen strokes. This does more than just bring the visual storytelling of Akira Minagawa to life. Every textile in the collection offers a wealth of delicate details, elegant shapes and tactile surfaces.

In addition, all the designs in the collection reference a natural landscape and their motifs and colours subtly interact. Consequently, they complement each other well and provide a host of opportunities for mixing and matching.

While the designs in the collection are part of the same family, each is distinctively individual. Some are more graphic; others have a more organic expression. They also feature different techniques, which range from the simple to the complex.

All four designs are well-suited to contract environments and private spaces alike.

Akira Minagawa

Born in Japan, Akira Minagawa is a clothes and textile designer perhaps best known for his *minä perhonen* label. Established in 1995, the brand has been sought after by fashion-conscious women of all ages and nationalities ever since.

Akira Minagawa seeks Inspiration from nature, life, society, and desires to create timeless designs that go beyond the limits of fashion. Akira Minagawa combines influences from Scandinavia and his cultural roots. He always begins his creative process by hand, and has a distinctive romantic, slightly naive style.

'Perhonen' is the Finnish word for butterfly. Akira Minagawa added this name to his collection in 2003 as he often travels in Scandinavia and feels an affinity with the design culture. He felt the butterfly matched the lightness and colours of his collection and the fact that his textiles offer as many variations 'as there are varieties of butterfly.'

Akira Minagawa: *'I aim to design clothes so that they last for a long time and improve with everyday use. I do not want to be just a fad or give a strong impact that does not last. I think of upholstery in the same way: I think of the charm that it will have when it is held dear for a long time, the allure it will have with the flow of time.'*

For further information, please contact press@kvadrat.org

kvadrat.dk



Forest Nap

95% wool, 5% nylon
140 cm wide
18 colourways

Woollen *Forest Nap* is a simple upholstery textile. Constructed with a plain weave, it can be described as the base textile in the Akira Minagawa collection.

Forest Nap comes in an array of colours. These range from understated natural hues to bolder notes like bright red. *Forest Nap* combines well with the patterned textiles in the collection, and is particularly suited to cover large surfaces.



Stick Tree

95% wool, 5% nylon
Embroidery: 100% polyester
140 cm wide
11 colour ways

Stick Tree is an embroidered woollen upholstery textile with a *Forest Nap* base. Its pattern consists of oblong sticks which together suggest a number of shapes. Redrawn for the collection to illustrate thick stitched lines, this was originally created by Akira Minagawa for printed fabrics in his fashion collection.

Stick Tree comes in colourways ranging from pronounced to understated. Depending on the colourway the stitching either contrasts with the base colour or is tone-on-tone.



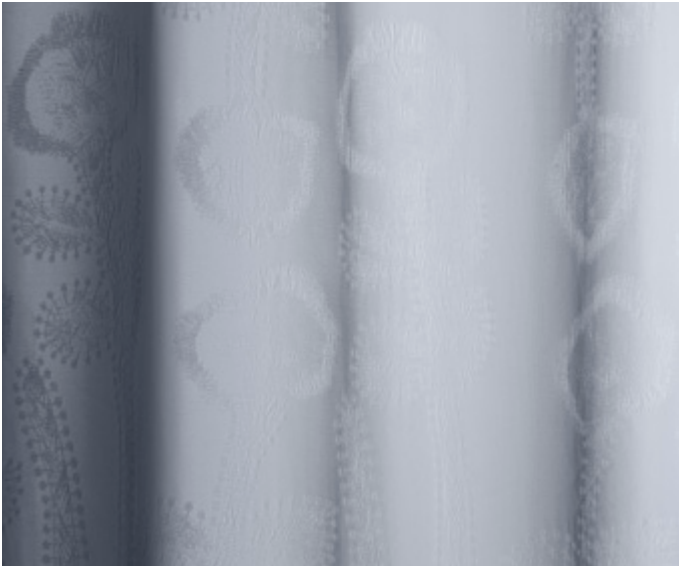
Crystal Field

53% cotton, 38% wool, 9% nylon
140cm wide
8 colourways

Crystal Field is a highly structured, dense épinglé upholstery textile. It is reminiscent of looking at a patchwork of fields from above: as you get closer to it, patterns within patterns are revealed, showing intriguing depths reminiscent of crystals.

The design combines geometric shapes constructed from dots, which break down into different patterns. These are created by using looped yarns that, through combining different colours, create the illusion of stitching.

Crystal Field comes in intense combinations of blues, greens, browns and cream tones.



Frost Garden

100% Trevira CS

320cm wide

8 colourways

Frost Garden is a translucent curtain with a precise, repeated 'naïve flower' pattern created through the weave. As the light changes, or when the curtain catches the wind, this emerges from the fabric in different ways.

The pattern is created with a special weave that resembles lace. *Frost Garden* comes in 8 matte, frosted colourways, which have a mineral-like character.