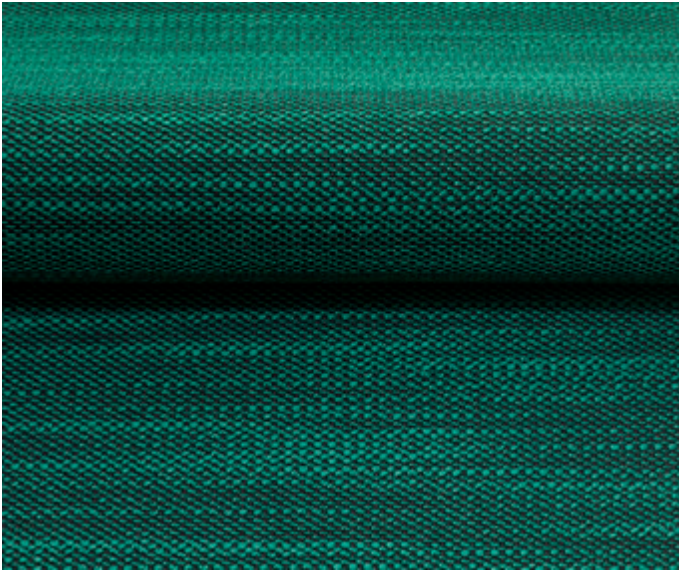


Lila and Raas
Doshi Levien

kvadrat



Lila
92% new wool, worsted, 8% nylon
140 cm wide
29 colourways



Raas
92% new wool, worsted, 8% nylon
140 cm wide
29 colourways

Lila and Raas

Crafted by design duo Doshi Levien, *Lila* and *Raas* are vibrant upholstery textiles with an exceptional colour story.

Both *Lila* and *Raas* combine two voluminous unicoloured yarns: a regular yarn in the weft and an irregularly textured slub yarn in the warp. This gives them a tactile, lively surface that has a bouclé feel and the cool touch of linen.

Though the textiles share the same construction and combine well, they are markedly individual. Whereas *Raas* is densely woven with a precise gridded expression that is balanced by the slight irregularity of a slub yarn, *Lila* has an ikat-like, striated pattern and a more relaxed character.

Inspired by the commonalities of outwardly contrasting worlds – Royal Indian miniature paintings, glazed Chinese ceramics and Modernist paintings – the sensual colour concept for the textiles comprises natural, deep tone-on-tone colours and subtle combinations, which unite to create intriguing new hues. The names of the fabrics, which are derived from Hindu mythology, reflect this. *Lila* means ‘play’ or ‘dance’ while *Raas* refers to ‘aesthetics’ and ‘feelings’.

Often designed in pairs, the colours for *Lila* and *Raas* are unusual and surprising. Under closer inspection, the textiles reveal nuances that challenge initial perceptions, as well as eye-catching, unexpected details.

To realise their vision, Doshi Levien mixed more than 100 gouache colours by hand, then hand-painted them onto samples. These were used as reference in production to dye the yarn with great accuracy – resulting in sophisticated, elegant colours that cannot be found in any existing colour systems.

Nipa Doshi: *“Working on Lila and Raas has been a very deep and intense exploration in aesthetics of mixing colour. We wanted to create colour by mixing paints by hand, rather than choosing colour references from existing colour charts.”*

While obvious contrasts exist between ancient and modern arts, the roots of the colour concept are in similarities these different worlds share: the abstract portrayal of colour in paintings, their architectural feel and organisation of space.

Nipa Doshi: *“There is play of aesthetics, between ancient and modern references, vivid and faded colours, memories and remains of colour on architecture; two colours layered on top of each other like textured glazes.”*

Durable *Lila* and *Raas* are suited to private and public spaces alike. They work together well, opening possibilities for combination in an interior, or on a single piece of furniture.

Doshi Levien

Established in 2000 by Jonathan Levien and Nipa Doshi, Doshi Levien is an internationally acclaimed design practice. Their work celebrates the hybrid and fuses cultural ideas, technologies, storytelling, industrial design and fine craftsmanship.

Doshi Levien works across different disciplines, producing output for museums and industry leaders, which includes installations, as well as limited edition and industrial products, ranging from furniture to ceramics.

Jonathan Levien and Nipa Doshi have been awarded the ICFF Editor's Award 2014, 2015 Wallpaper Design Awards and the 'Designers of the year' 2015 EDIDA Award. Their exhibitions include 'Das Haus' for imm cologne, 'Wool Parade' for Kvadrat and 'Living Objects: made for India' for the Europalia Festival of India.

For further information, please contact
press@kvadrat.dk

kvadrat.dk