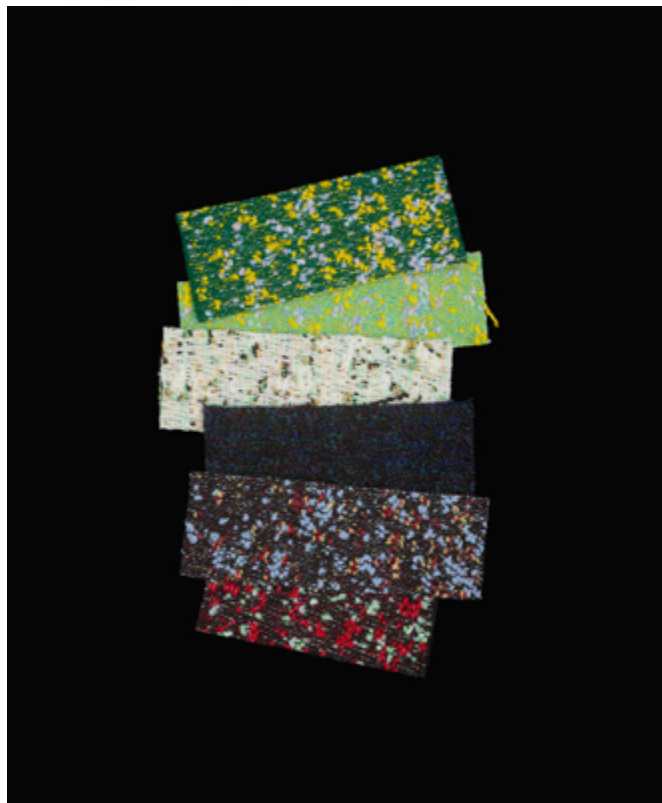
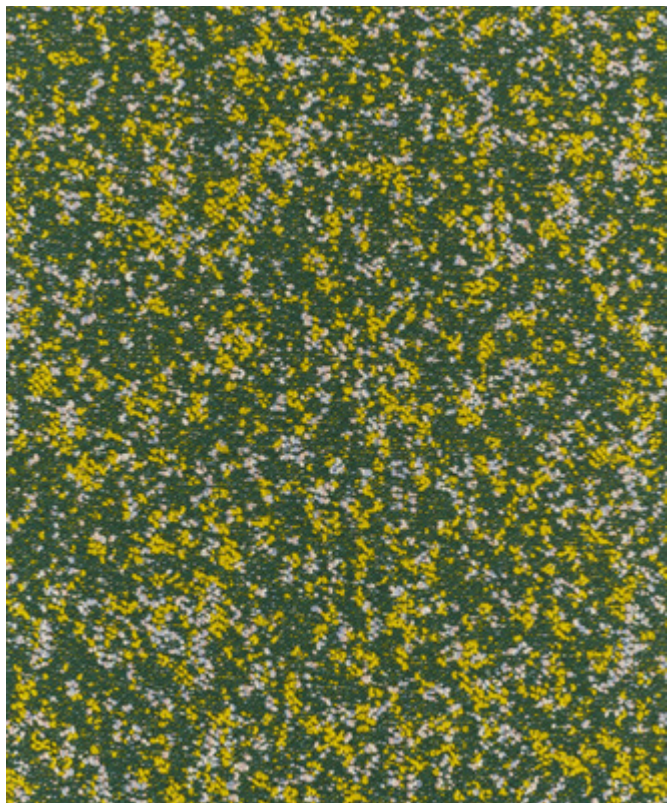


## KVADRAT/RAF SIMONS



### ATOM

Design: Raf Simons  
Type: Upholstery  
Composition: 90% new wool, 8% nylon, 2% polyester  
Yarn type: Worsted  
Binding: Jacquard  
Width: App. 150 cm  
Weight: App. 1060 g/lin.m  
Repeat: None  
Cleaning: Vacuuming and dry cleaning  
More info : Maintenance instruction—please see website

#### Abrasion

Approximately 65.000 Martindale rubs EN ISO 12947

#### Pilling

Note 4, EN ISO 12945

#### Seam slippage

Warp : 2.5 mm Weft : 1.5 mm

#### Lightfastness

Note 7 ISO 105-B02

#### Fastness to rubbing

Dry note 4-5 ISO 105-X12

Wet note 3-5 ISO 105-X12

#### Flame resistance

AS/NZS 1530.3

BS 5852 Crib 5 with treatment \*

BS 5852 ignition source 3

BS 5852 part 1

EN 1021-1/2

IMO FTP Code 2010:Part 8

NFD 60 013

UNI 9175 1IM

US Cal. Bull. 117-2013

ÖNORM B1/Q1

\* To pass this test flame retardant treatment is necessary.  
We are looking into more environmental friendly alternatives but for now the external finisher may use a treatment containing halogen based flame retardants

#### Benefits of wool

Wool is a renewable resource

Wool is very comfortable, because of its ability to absorb/give off humidity

Wool is flame retardant

Wool is biodegradable

Wool is naturally soil resistant

Wool ages with grace

#### Quality benefits

Very good abrasion

Very good lightfastness

Flame retardant

#### Environmental benefits

Follow the EU Ecolabel dye restrictions incl. AZO dye and heavy metal restrictions

Complies with REACH regulation

#### Reduced emission

Greenguard and Greenguard Gold certified  
[www.greenguard.org](http://www.greenguard.org)

#### Warranty

10 years

See terms and conditions on [kvadrat.dk](http://kvadrat.dk)

For further information [kvadrat.dk](http://kvadrat.dk)

10 year warranty

